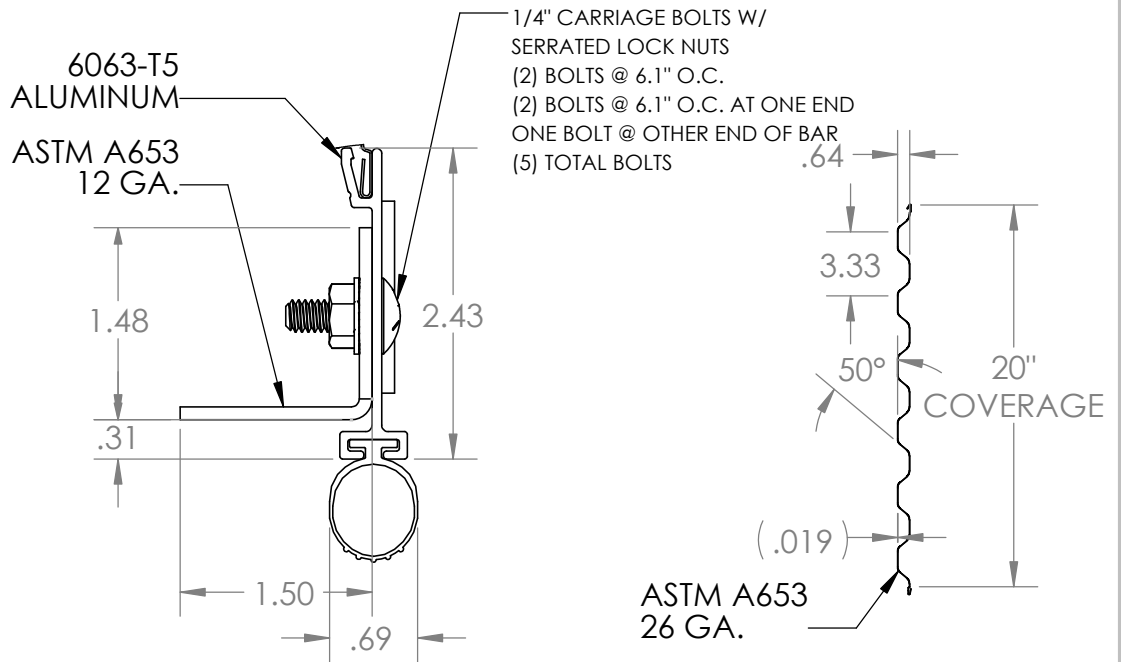
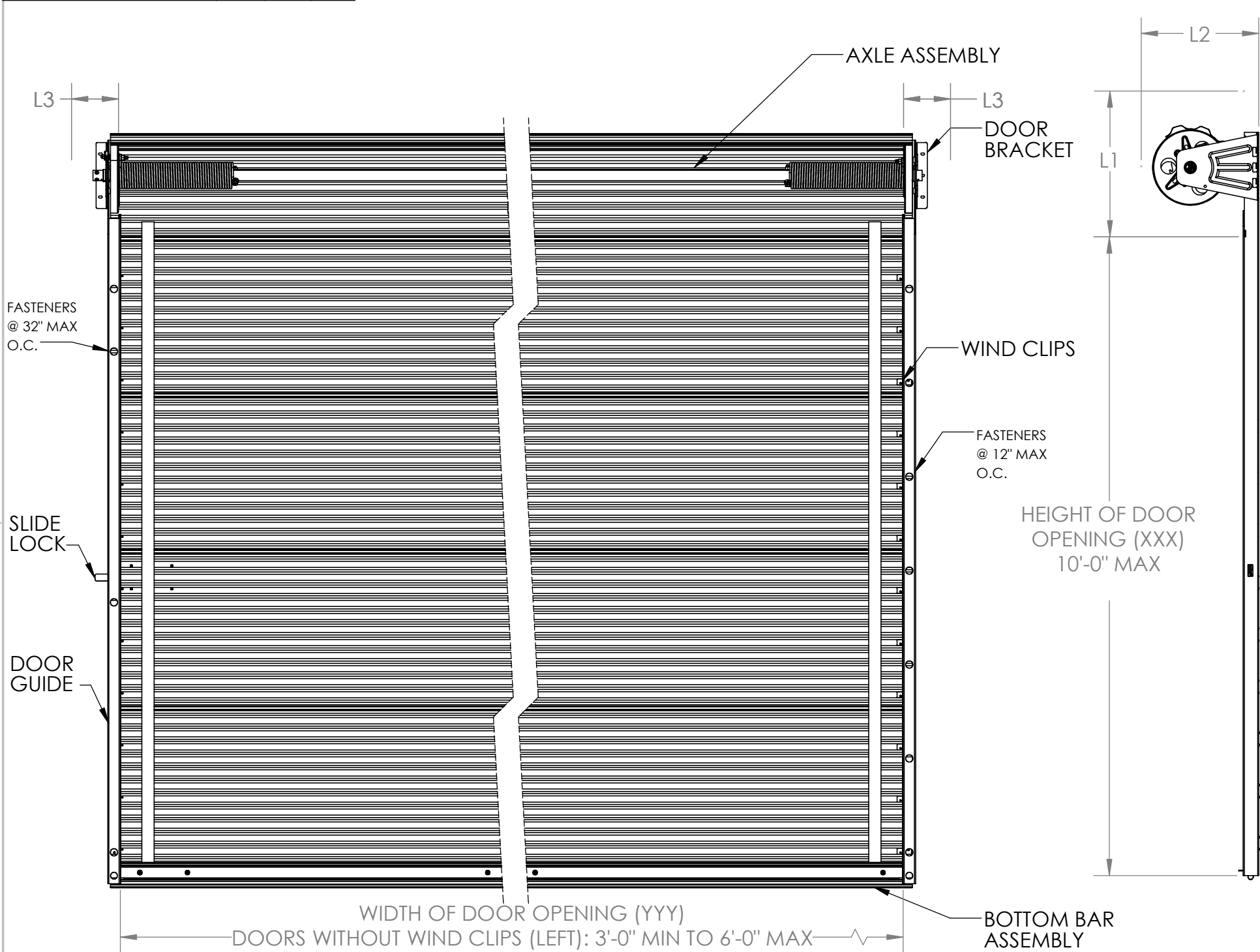


| MINIMUM HEADROOM<br>CLEARANCE FOR CRD-YYY-XXX | L1  | L2  | L3 |
|---|-----|-----|----|
| FOR XXX <= 96                                 | 16" | 18" | 6" |
| FOR XXX > 96                                  | 18" | 20" |    |

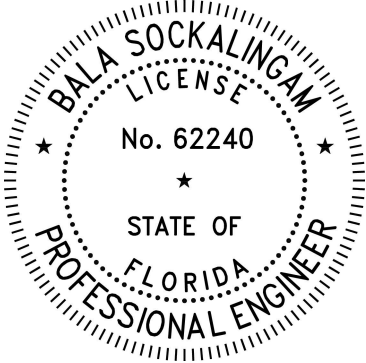
| REVISIONS |                                   |            |          |
|-----------|-----------------------------------|------------|----------|
| REV.      | DESCRIPTION                       | DATE       | APPROVED |
| A4        | UPDATED TO REFLECT LATEST TESTING | 03/06/2025 | K.WATSON |



**BOTTOM BAR  
ASSEMBLY DETAIL**

**DOOR PANEL  
DETAIL**

| DOOR WIDTH | DESIGN PRESSURE<br>(PSF) |
|------------|--------------------------|
| 3'-0"      | +40.0/-51.0              |
| 3'-6"      | +35.2/-44.8              |
| 4'-0"      | +31.7/-40.1              |
| 5'-0"      | +26.6/-31.1              |
| 6'-0"      | +23.3/-29.2              |
| *7'-0"     | +33.2/-36.8              |
| *8'-0"     | +29.0/-32.2              |
| *8'-8"     | +26.8/-29.7              |
| *9'-0"     | +25.0/-27.0              |
| *10'-0"    | +19.4/-22.7              |



\*REQUIRES WIND CLIPS

This item has been digitally signed and sealed by Bala Sockalingam, PE, on the date indicated.

Printed copies of this document are not considered signed and sealed and this signature must be verified on any electronic copies.

**INTERIOR ELEVATION**

**SIDE ELEVATION**

NOTES:  
1. PARENTHESES DENOTE REFERENCE DIMENSIONS



**PROPRIETARY AND CONFIDENTIAL**  
THE INFORMATION CONTAINED IN THIS DRAWING IS THE SOLE PROPERTY OF CENTRAL STATES MANUFACTURING INC. ANY REPRODUCTION IN PART OR AS A WHOLE WITHOUT THE WRITTEN PERMISSION OF CENTRAL STATES MANUFACTURING INC. IS PROHIBITED.

| UNLESS OTHERWISE SPECIFIED: |                                       |
|-----------------------------|---------------------------------------|
| DIMENSIONS ARE IN INCHES    | INTERPRET TOLERANCING PER: ASME Y14.5 |
| DECIMAL TOLERANCES:         |                                       |
| X.X ±0.125                  |                                       |
| X.XX ±0.060                 |                                       |
| X.XXX ±0.030                |                                       |
| ANGULAR: ±2°                |                                       |

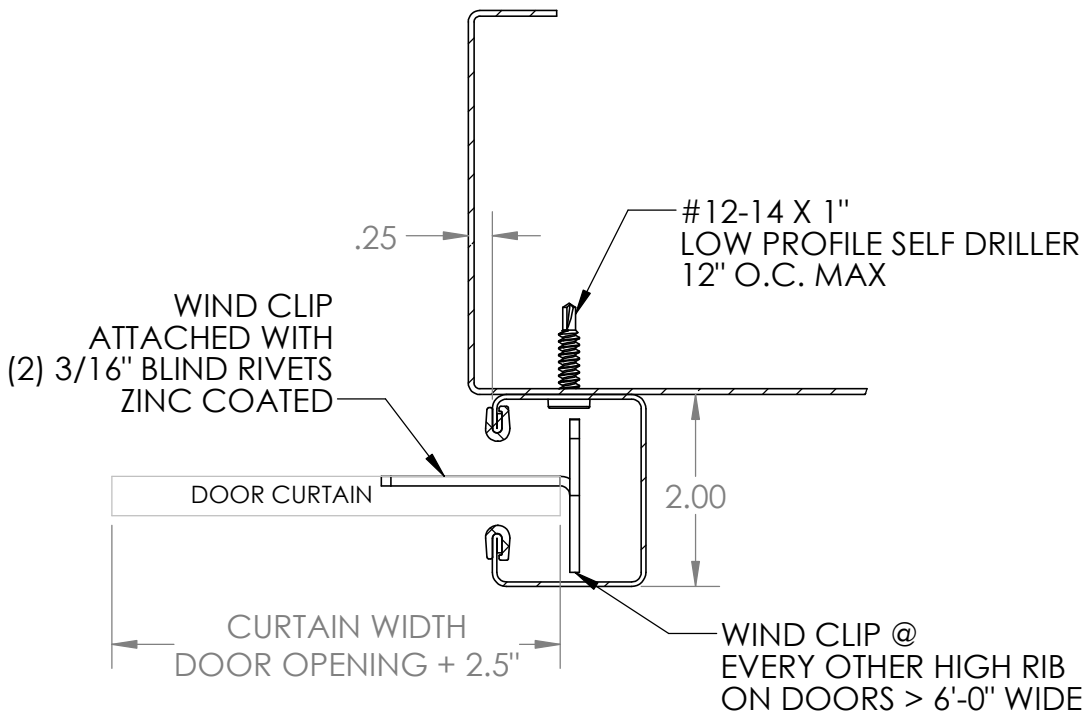
**MATERIAL:**  
VARIES

**FINISH:**  
VARIES

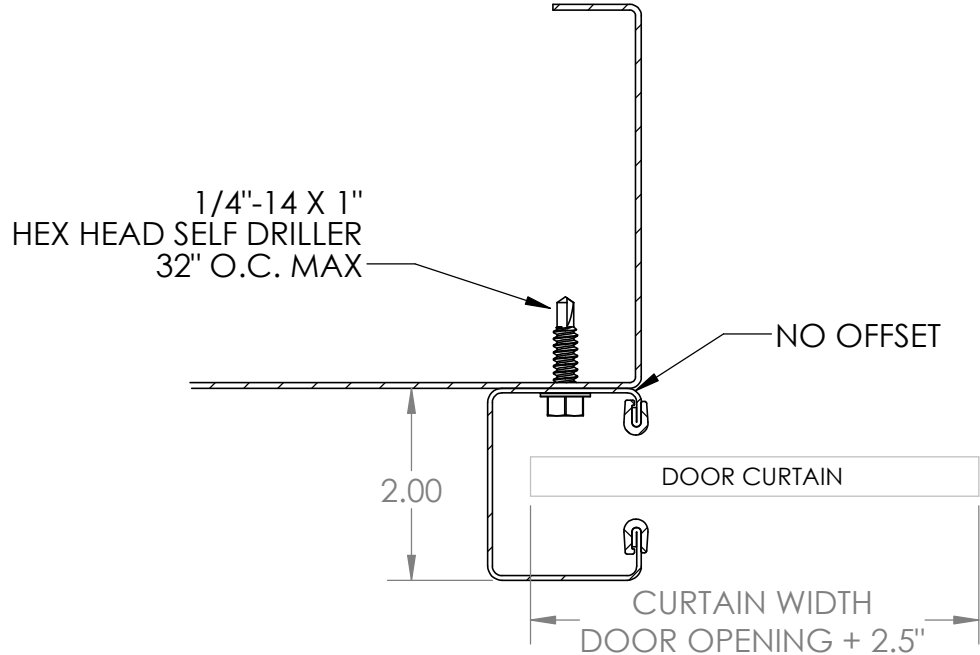
|           | NAME     | DATE       |
|-----------|----------|------------|
| DRAWN     | K.WATSON | 01/22/2025 |
| CHECKED   |          |            |
| ENG APPR. | K.WATSON | 01/22/2025 |

|  |             |                          |
|--|-------------|--------------------------|
| <b>PART NUMBER:</b><br><b>MODEL 7500</b>                       |             | <b>REV:</b><br><b>A4</b> |
| <b>DESCRIPTION:</b><br>MODEL 7500 HIGH WIND RATED ROLL-UP DOOR |             |                          |
| DO NOT SCALE DRAWING   | SCALE: 1:16 | SHEET 1 OF 3             |

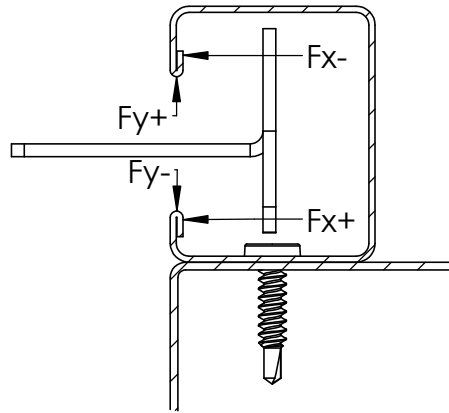
B



**DOOR GUIDE TO STEEL JAMB**  
FOR DOOR WIDTHS > 6'-0"

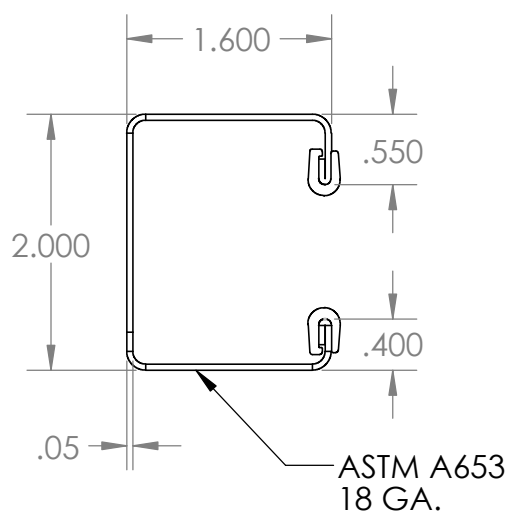


**DOOR GUIDE TO STEEL JAMB**  
FOR DOOR WIDTHS ≤ 6'-0"

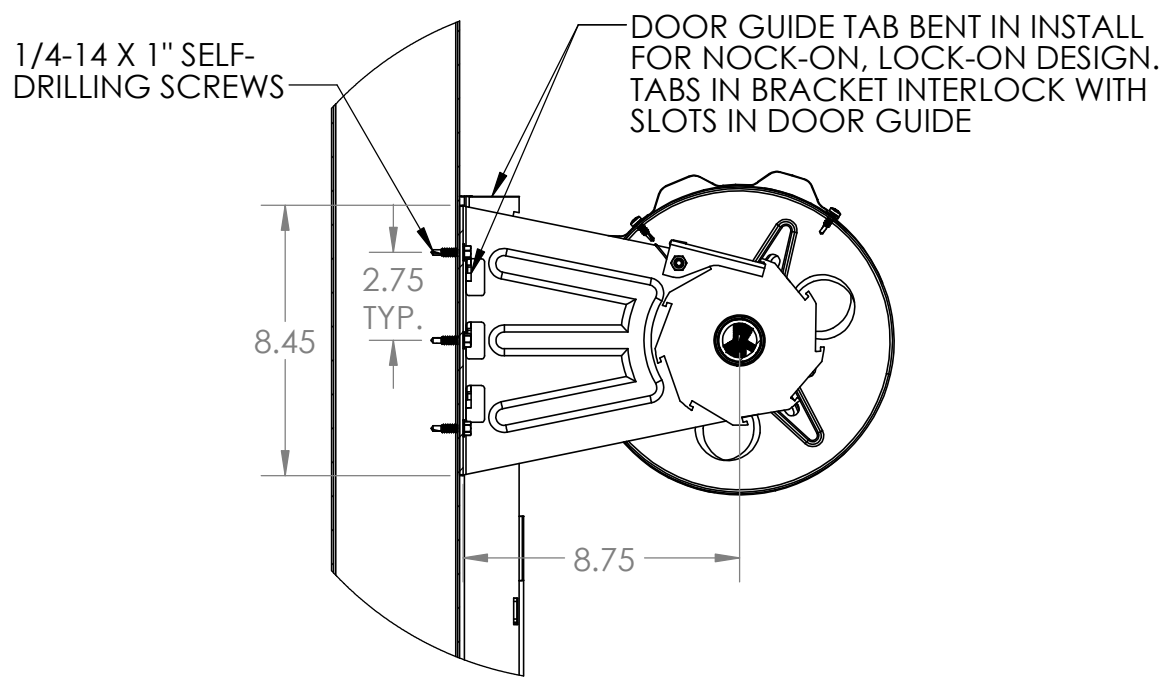


**DOOR GUIDE FORCE**

A



**DOOR GUIDE**  
**DETAIL**



**DOOR BRACKET TO STEEL JAMB**

| WIDTH  | MAX REACTION (PFL) |        |       |        |
|--------|--------------------|--------|-------|--------|
|        | Fy+                | Fy-    | Fx+   | Fx-    |
| 3'-0"  | 60.0               | -76.5  | N/A   |        |
| 3'-6"  | 61.6               | -78.4  |       |        |
| 4'-0"  | 63.4               | -80.2  |       |        |
| 5'-0"  | 66.5               | -77.8  |       |        |
| 6'-0"  | 69.9               | -87.6  |       |        |
| 7'-0"  | 116.2              | -128.7 | 37.5  | -79.7  |
| 8'-0"  | 116.2              | -128.7 | 87.3  | -133.1 |
| 8'-8"  | 116.2              | -128.7 | 153.7 | -200.5 |
| 9'-0"  | 112.5              | -121.5 | 151.6 | -185.8 |
| 10'-0" | 97.0               | -113.5 | 97.6  | -163.6 |

B

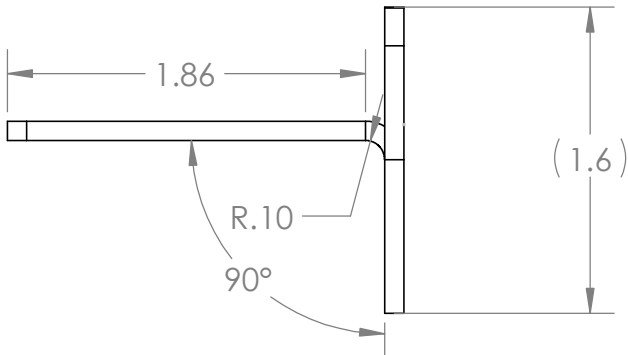
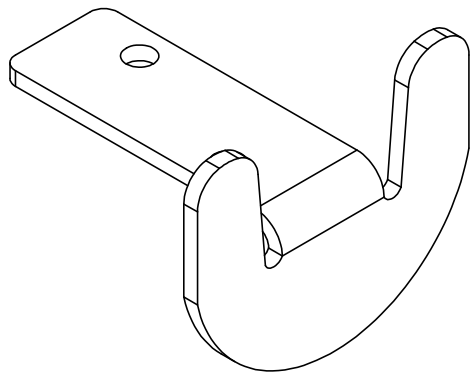
A

4

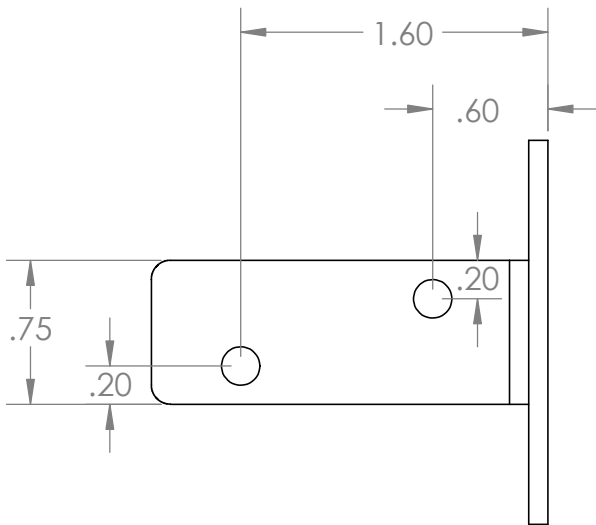
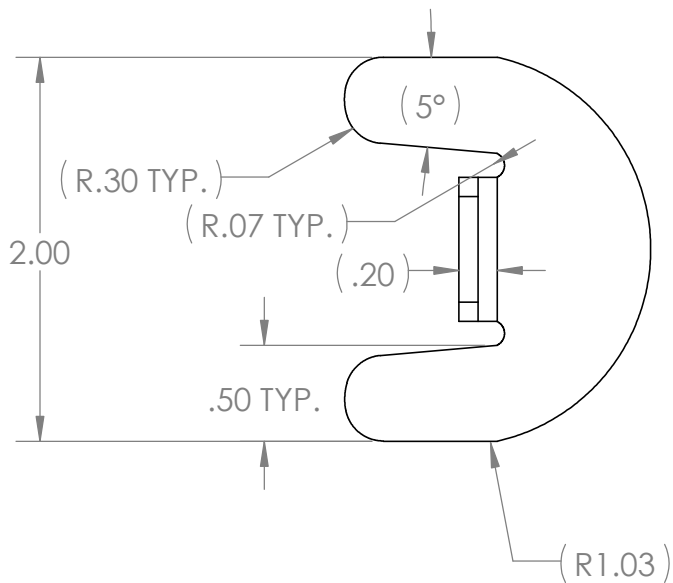
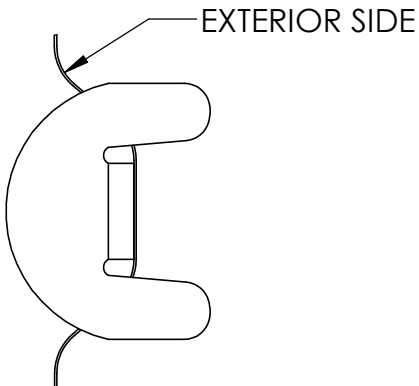
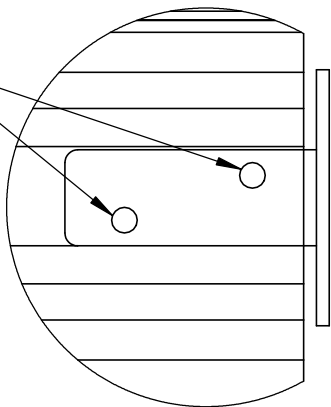
3

2

1



ATTACHED WITH  
MIN. (2) 3/16" BLIND  
RIVETS



WIND CLIPS PLACED EVERY OTHER RIB, STARTING AT THE FIRST RIB ABOVE BOTTOM BAR. (4) PANELS HAVE CLIPS ATTACHED FOR 7'-0" TALL DOORS, (5) PANELS HAVE CLIPS ATTACHED FOR 8'-10' TALL DOORS. ON LEFT SIDE OF DOOR, ONE CLIP IS MOVED DOWN ONE RIB TO CLEAR THE LATCH.

WIND CLIP ATTACHMENT

WIND CLIP  
ASTM A653 12 ga.  
GRADE 33 MIN  
OR EQUIVALENT



PROPRIETARY AND CONFIDENTIAL  
THE INFORMATION CONTAINED IN THIS  
DRAWING IS THE SOLE PROPERTY OF  
CENTRAL STATES MANUFACTURING INC. ANY  
REPRODUCTION IN PART OR AS A WHOLE  
WITHOUT THE WRITTEN PERMISSION OF  
CENTRAL STATES MANUFACTURING INC. IS  
PROHIBITED.

UNLESS OTHERWISE SPECIFIED:  
DIMENSIONS ARE IN INCHES  
DECIMAL TOLERANCES:  
X.X ±0.125  
X.XX ±0.060  
X.XXX ±0.030  
ANGULAR: ±2°  
INTERPRET TOLERANCING PER: ASME Y14.5

MATERIAL:  
VARIES

FINISH:  
VARIES

|           | NAME     | DATE       |
|-----------|----------|------------|
| DRAWN     | K.WATSON | 01/22/2025 |
| CHECKED   |          |            |
| ENG APPR. | K.WATSON | 01/22/2025 |

|  |            |              |
|--|------------|--------------|
| PART NUMBER:<br>MODEL 7500                               |            | REV:<br>A4   |
| DESCRIPTION:<br>MODEL 7500 HIGHT WIND RATED ROLL-UP DOOR |            |              |
| DO NOT SCALE<br>DRAWING                                  | SCALE: 1:1 | SHEET 3 OF 3 |

4

3

2

1